

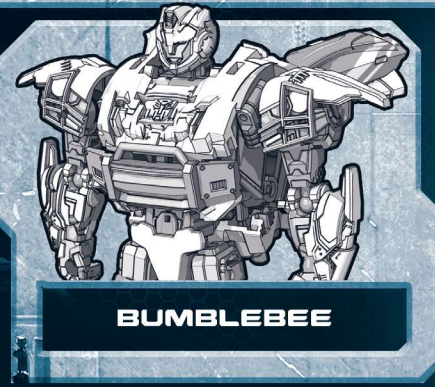
対象年齢  
15才以上

# TRANSFORMERS REACTIVATE

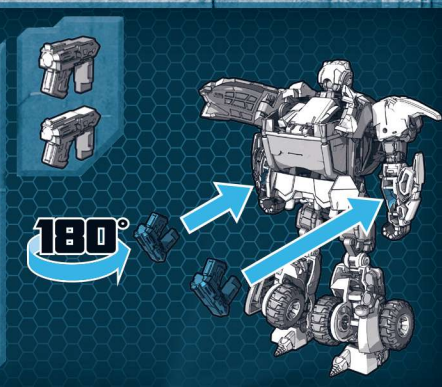
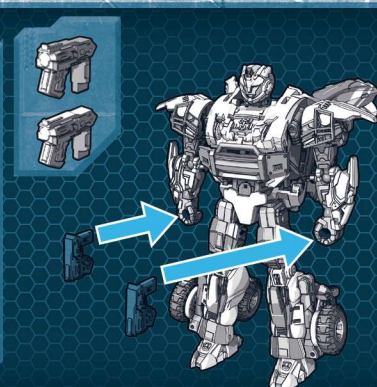
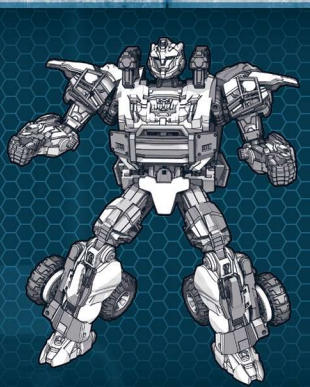
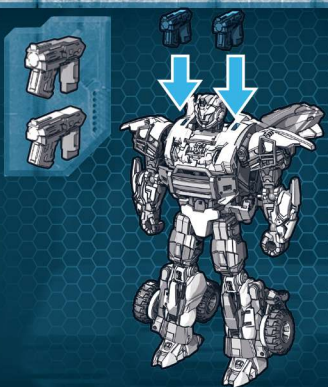


BUMBLEBEE

STARSCREAM



BUMBLEBEE



1



2



3



4



5

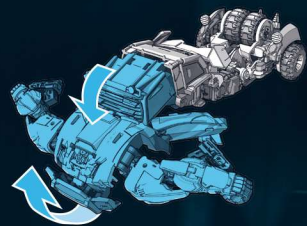


※写真・イラストは実際の商品と異なる場合があります。

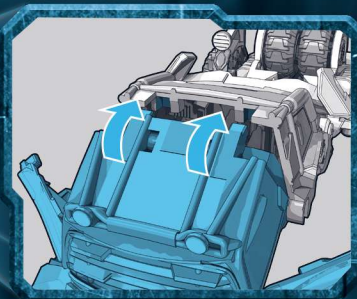
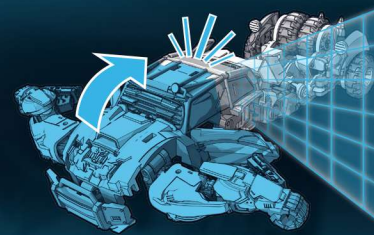


6

90°

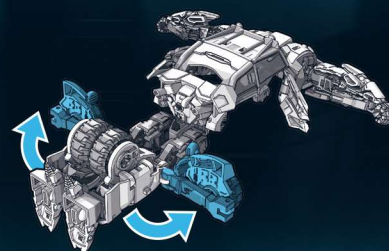


7

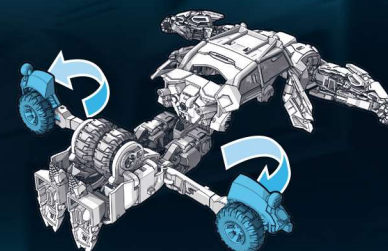


180°

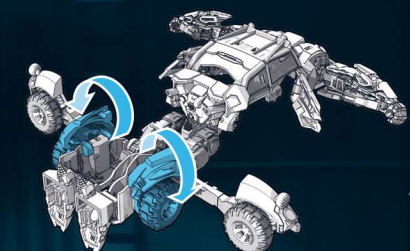
8



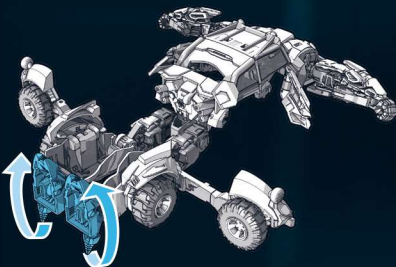
9



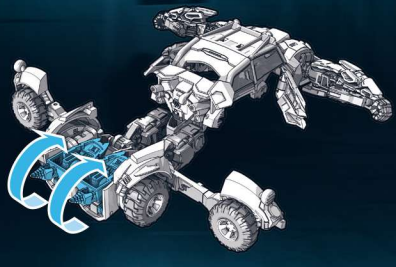
10



11

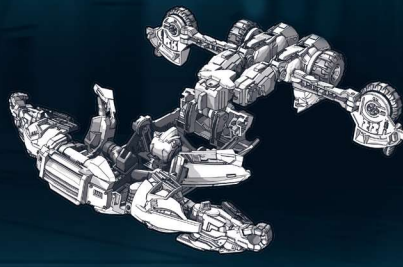


12

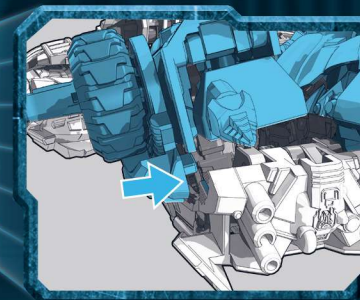
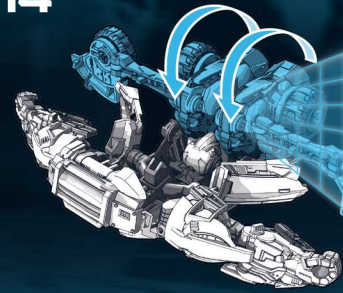


180°

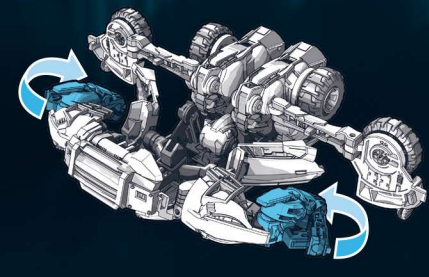
13



14



15



16

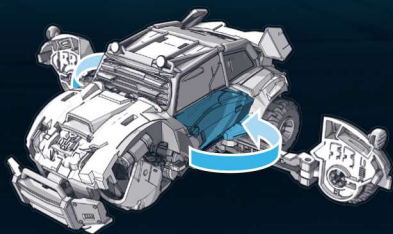


17

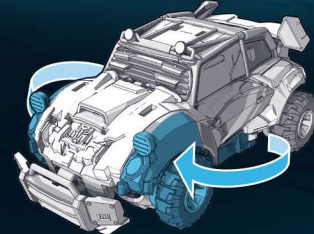


180°

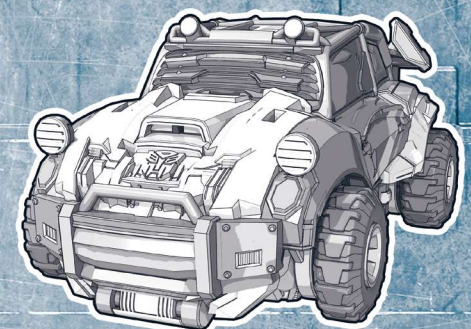
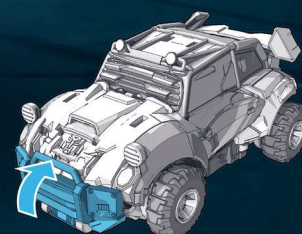
18



19

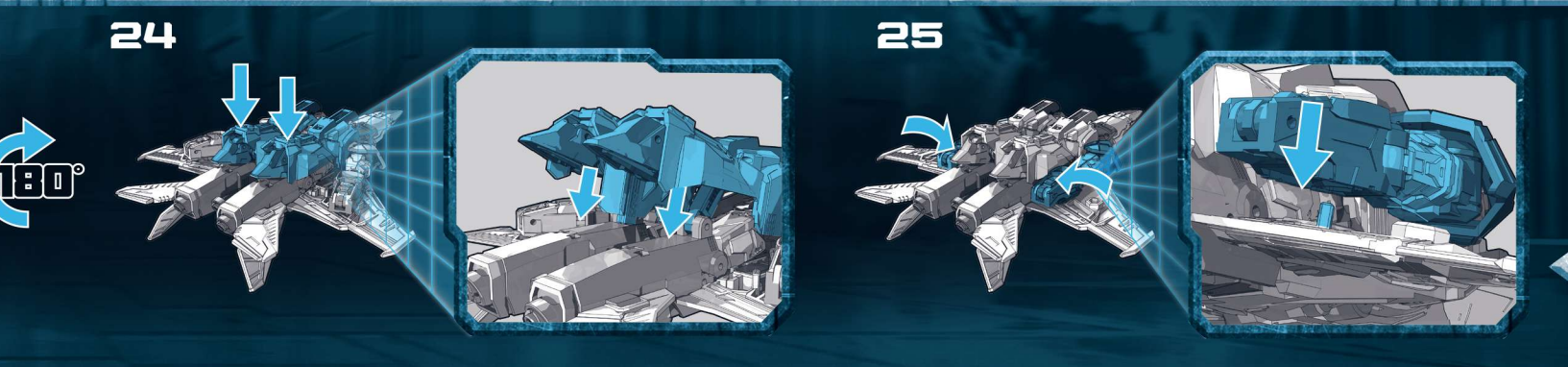
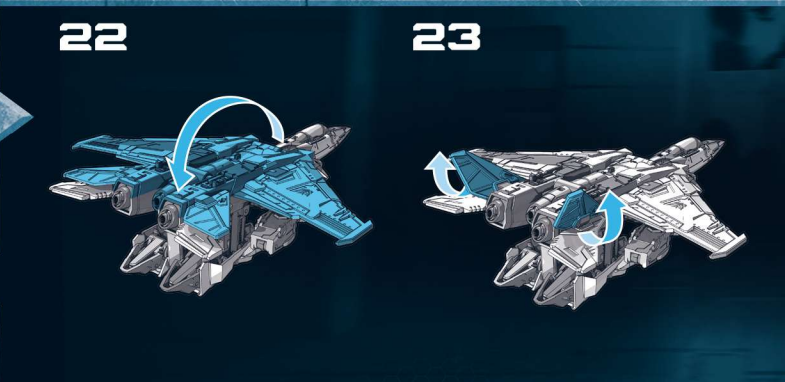
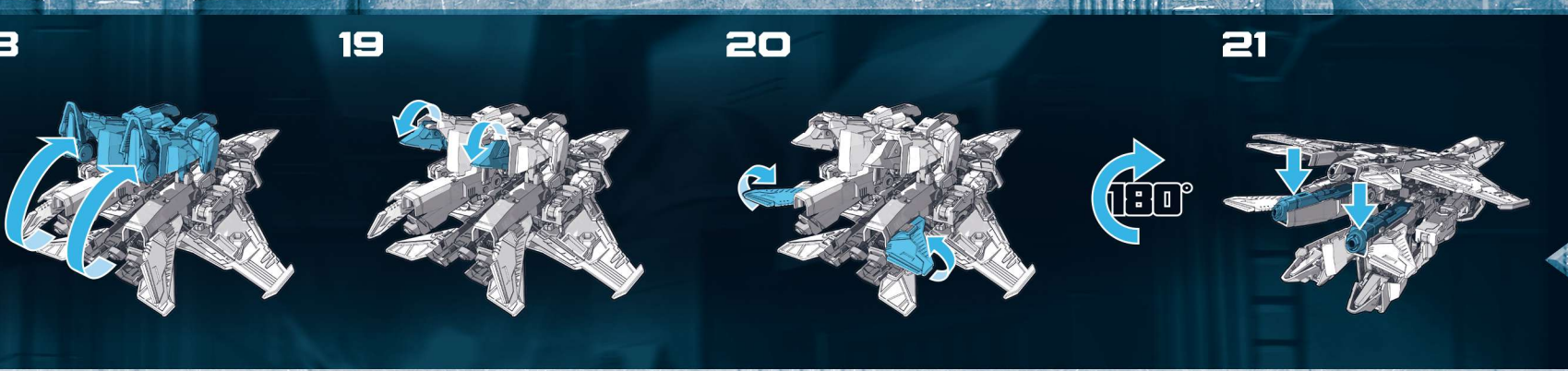
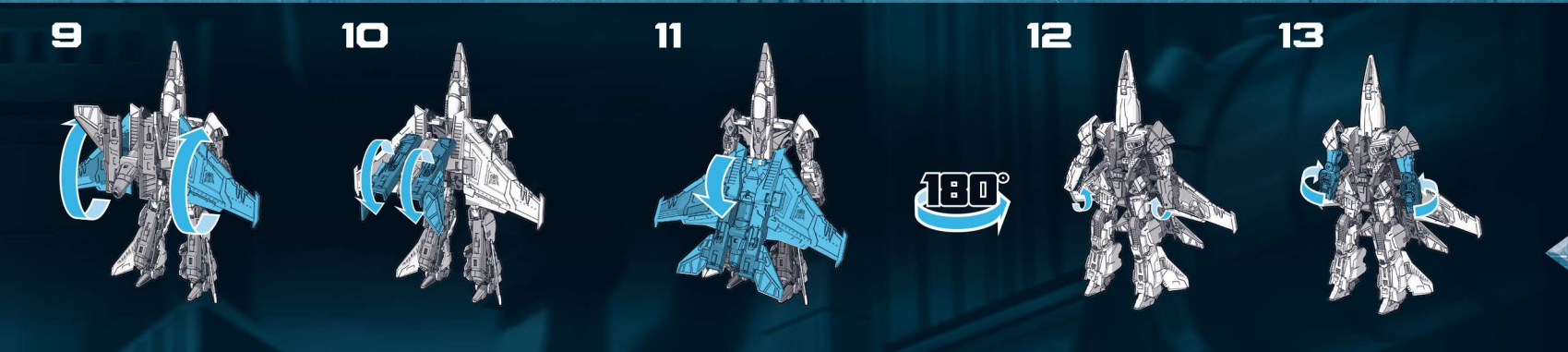
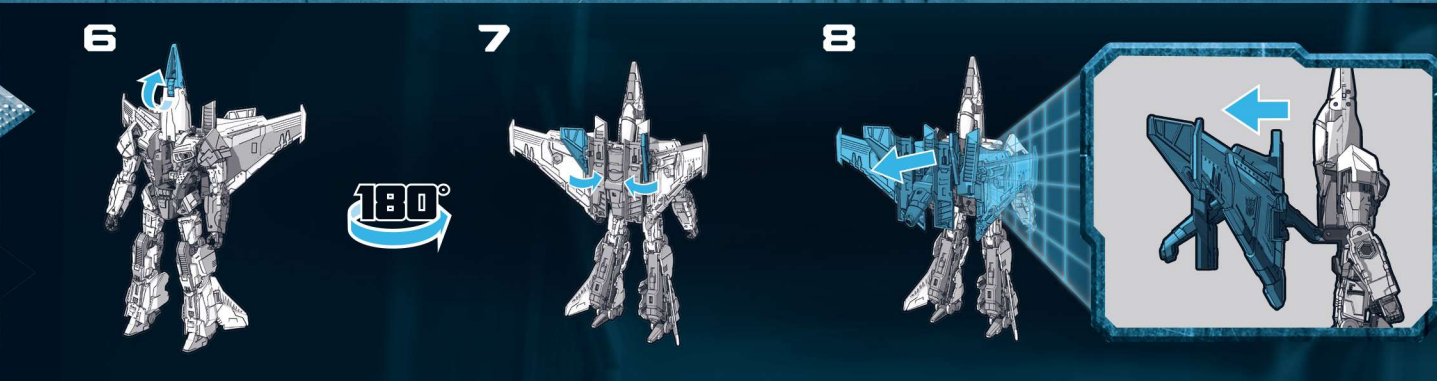
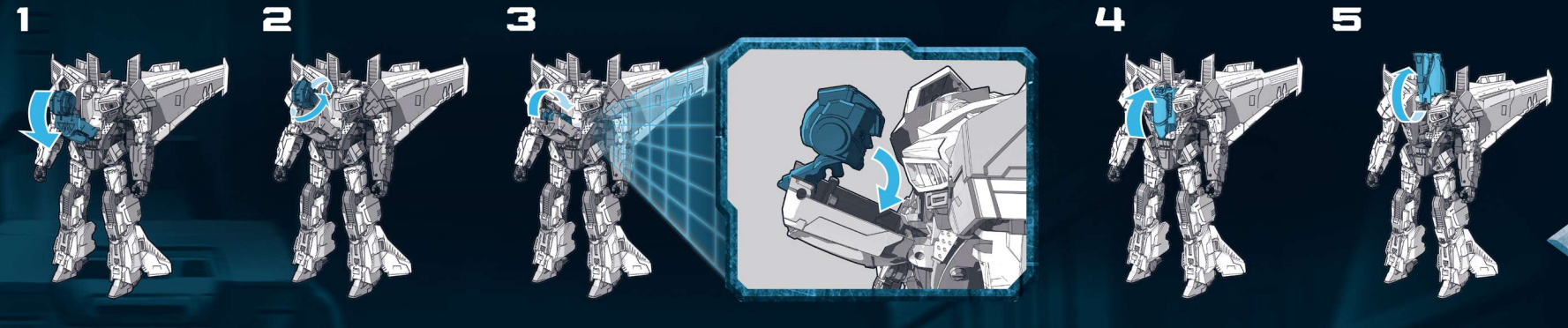
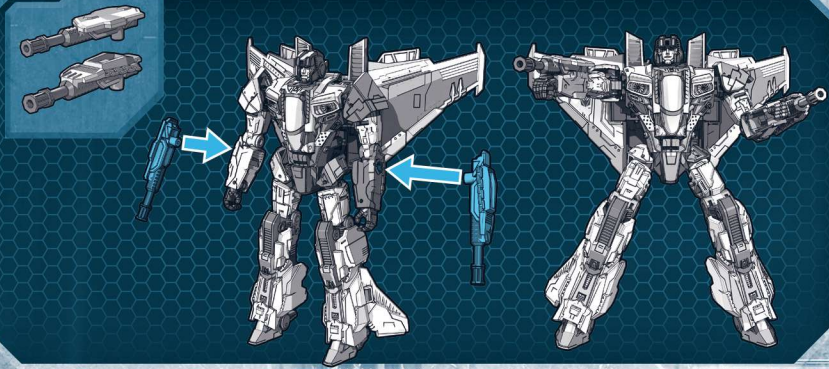


20

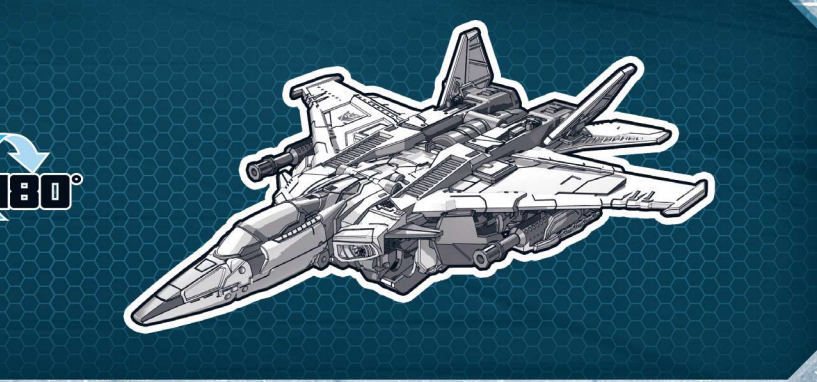
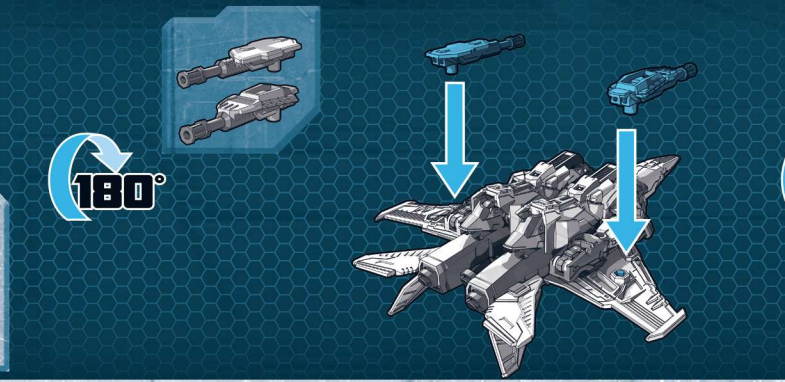
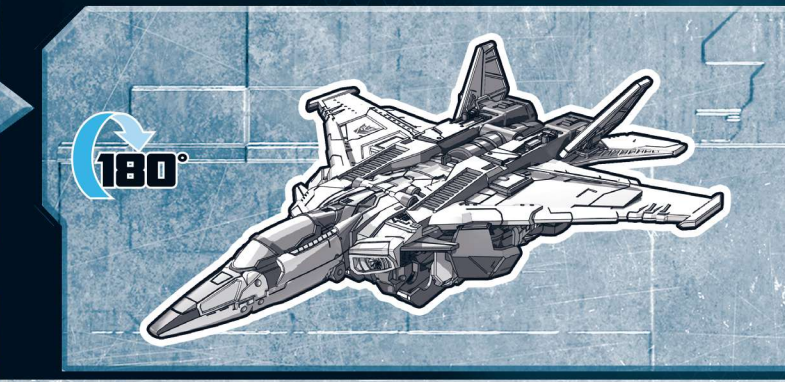




STARSCREAM



- Ⓔ Retain instructions for future reference.
- Ⓕ Conservez ces instructions pour référence ultérieure.
- Ⓖ Bitte die Anleitung für spätere Rückfragen aufbewahren.
- Ⓗ Conserve estas instrucciones para futuras referencias.
- Ⓛ Guardar instrucciones para eventuales consultas.
- Ⓝ Conserva le istruzioni come futuro riferimento.
- Ⓞ Bewaar de gebruiksaanwijzing om later nog eens te lezen.
- Ⓟ Spara instruktionerna för att kunna hänvisa till dem i framtiden.
- Ⓠ Gem vejledninger til fremtidig referencebrug.
- Ⓡ Ta vare på disse instruksjonene for fremtidig referanse.
- Ⓢ Säilytä nämä tiedot tulevaa tarvetta varten.
- Ⓣ Διαβάστε τις οδηγίες για μελλοντική αναφορά.
- Ⓤ Zachowaj instrukcje na przyszłość.
- Ⓡ Örişd meg a használati útmutatót.
- Ⓢ Илери де басырмак üzere талиматлар саклаын.
- Ⓣ Түгөтү информатсия усчовейте про будучиі použitі.
- Ⓤ Návod si odložte na použitie v budúcnosti.
- Ⓡ Păstrează instrucțiunile pentru a le consulta în viitor.
- Ⓢ Запазете инструкциите за бъдещи справки.
- Ⓣ Sačuvajte upute za buduću upotrebu.
- Ⓡ Instrukcija pasilikite ateiciā.
- Ⓢ Navodila shraniti, mogoče jih boš še potreboval.
- Ⓣ Збережіть інструкції для подальшого використання.
- Ⓡ Jāta juhised edasiseks kasutamiseks alles.
- Ⓣ Saglabajiet instrukciju atsaucel.
- Ⓡ احفظ بالتعليمات للرجوع إليها في المستقبل.



SPLASH DAMAGE and its logo are registered trademarks of Splash Damage Ltd. All rights reserved.  
 Manufactured under license from TOMY Company, Ltd. TAKARATOMY logo is property of Tomy Company, Ltd. TRANSFORMERS and HASBRO and all related trademarks and logos are trademarks of Hasbro, Inc. © 2023 Hasbro.  
 Hasbro, Pawtucket, RI 02861-1059 USA. HASBRO CANADA, LONGUEUIL, QC, CANADA J4G 1G2. US/CANADA TEL. 1-800-255-5516. Importado por: HASBRO DE MEXICO, S. DE R.L. DE C.V. Boulevard Manuel Ávila Camacho #32, piso 3, Colonia Lomas de Chapultepec I Sección, Alcaldía Miguel Hidalgo, C.P. 11000, Ciudad de México, México. Centro de Servicio para México: TEL. 5876-2998 y para el interior de la República TEL. 01-800-7-12-62-25. Manufactured by/Produit de: Hasbro SA, Rue Emile-Boéchat 31, 2800 Delémont, CH. Represented by/Reprezentat de: Hasbro\_DeEntree 240, 1101 EE Amsterdam, NL. © Hasbro UK Ltd., P.O. Box 43, Newport, NP19 4YH, UK. © Üretici Firma Bilgileri: Hasbro SA, Rue Emile-Boéchat 31, 2800 Delémont Isviçre TEL +41 324210800. Hasbro Oyuncak San. ve Tic. A.Ş. tarafından ithal edilmiştir. Tüketicici Hizmetleri: Burhaniye Mah. Abdullahağa Cad. No: 51/2 34676 Beylerbeyi İstanbul Türkiye TEL +90 2164229010. Ürünün hangi yaş grubuna ait olduğu kutunun ön yüzünde belirtilmiştir. 'M' harfi ile belirtilen sayılar 'ay' anlamına gelmektedir.

F0383 PN00086157